

Arterial explorations

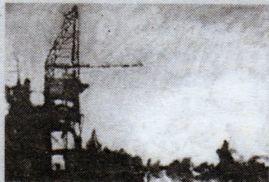
Once an essential link between the Old Port and Lac St-Louis, the Lachine Canal has taken on a new life in the past few decades—cranes giving way to condo developments standing over sunbathers, leisure boaters, rollerbladers and, if you go far west enough, the odd soul dropping a fishin' line in the drink. Montreal artist **Scott MacLeod** captures this transition in his new series of paintings, *Lachine Canal: Past and Present*,

now showing in the Annex of the McAuslan Brewery (5080 St-Ambroise).

"I've been photographing the Canal for the past two years," says MacLeod, whose last show centred on the history of NYC's Central Park, "so I approached [brewery owner] Peter McAuslan and we've been working together on setting up the exhibition. He has a very green approach to business and a strong sense of keeping it in the community."

MacLeod is offering one-hour bilingual tours of the annex, discussing the Canal's history and his artistic practice, \$6. For info, call 271-1468 or visit www.macleod9.com

—MATTHEW WOODLEY



CRANE DRAIN:
A MacLeod Painting